

## 561 MMC

Hydraulic Conversion Kit

## FEATURES

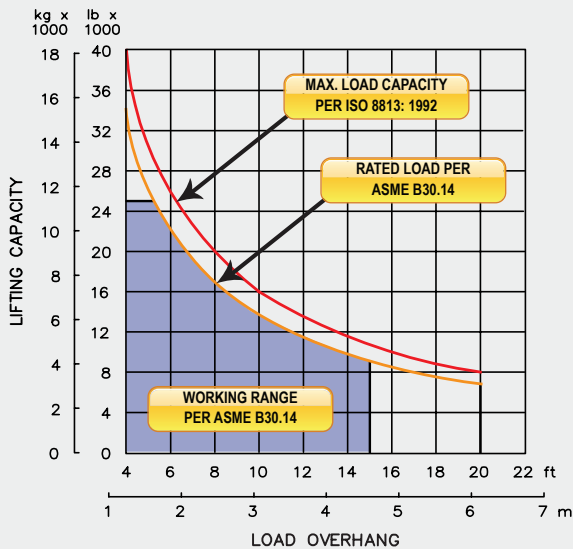
**Three lever hydraulic control system** allows simultaneous control of load and boom functions. The controls are easy to operate and require minimal operator training.

**Hydraulic boom stop** automatically prevents system over travel and damage to boom.

**Optional:**

- Tubular A-Frame Boom
- Remote Hydraulic Pilot Controls
- Extendible Hydraulic Counterweight
- Certified ROPS

### LOAD RATING



## SPECIFICATIONS

### Load Capacity

Maximum Load Capacity at 4 ft Overhang	40,000 lb (18,144 kg)
Rated Load at 4 ft Overhang	34,000 lb (15,422 kg)
Maximum Working Load at 4 ft Overhang	25,000 lb (11,362 kg)

### Winches

Boom Winch	Planetary, Single-Speed, Dual Brake System
Load Winch	Planetary, Two-Speed, Dual Brake System
Wire Rope Installed - Boom Winch	130 ft (39.6 m)
Maximum Cable Capacity - Boom Winch	368 ft (112 m)
Wire Rope Installed - Load Winch	130 ft (39.6 m)
Maximum Cable Capacity - Load Winch	368 ft (112 m)
Wire Rope - Boom & Load Line	5/8 in (16 mm), 6x36 EIPS, IWRC [41,200 lbs (18,688 kg) Minimum Breaking Strength]

### Boom and Blocks

Boom Line Parts	3
Load Line Parts	3
Typical Hook Speed (HI/LO)	50/25 ft/min (15.2/7.6 m/min)

### Hydraulic System

Directional Control Valve	3-Section, Open Center with Manual Levers
Maximum Operating Pressure	3,000 psi (207 bar)

### Weights

Total Hydraulic Conversion Kit	3,550 lb (1,610 kg)
--------------------------------	---------------------

## HYDRAULIC CONVERSION KIT